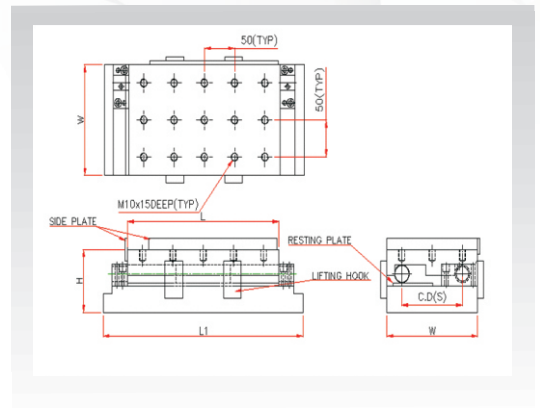
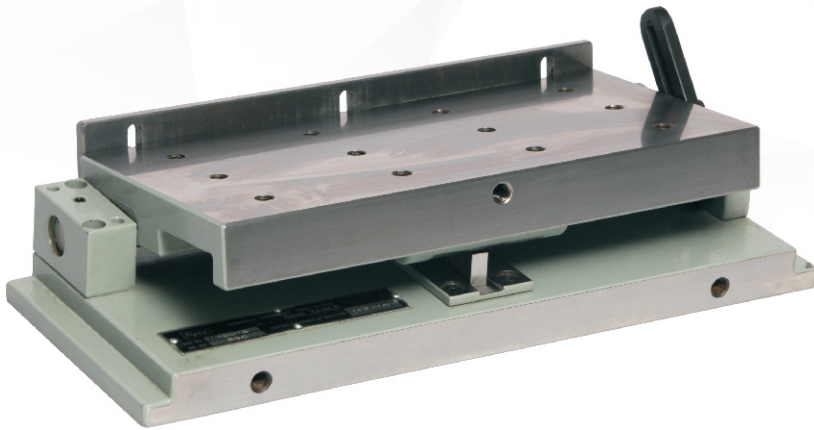


Sine Tables (Non Magnetic)

Series AA-601



- Sine tables are ideal for precision angle grinding & inspections.
- They are made from high quality steel & hardened and ground to 55 HRC \pm 2 HRC.
- An angle can be set to within \pm 5 seconds of a degree.
- Firm hinge clamps reduce possibility of distortions.
- Flatness 0.005mm per 100 mm. Center distance of the roller is within 0.005 mm.
- Tapped holes are provided on the top sides which facilitates clamping.
- Suitable for angle range from 0-45 degree.

Specifications:

Sr. No.	Cat. No.	Size in mm L X W X H	C. D. of Roller (S) mm	Bottom Plate Length (L1)
1	AA-6011	150 X 120 X 85	70	230
2	AA-6012	250 X 150 X 85	100	330
3	AA-6013	300 X 150 X 85	100	380
4	AA-6014	450 X 150 X 85	100	530