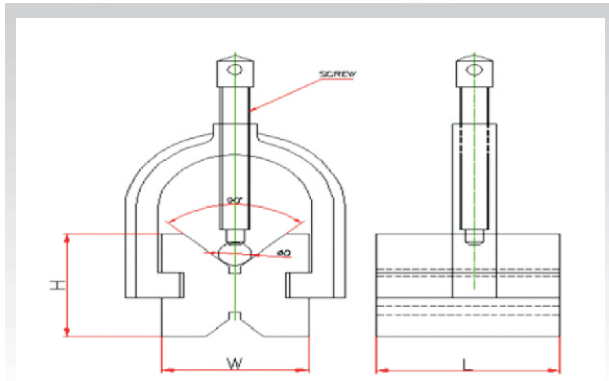


Hardened & Ground 'V' Blocks

Series AA-171



- 'V' Blocks are Hardened & Ground to 55 HRC \pm 2 HRC.
- The top 'V' and bottom 'V' are parallel within \pm 3 micron and it's squareness to the end faces and height variations to the 'V' Block in a pair is within \pm 3 micron.
- Supplied with Clamp for holding job.
- Hold square and Round work.

Specifications:

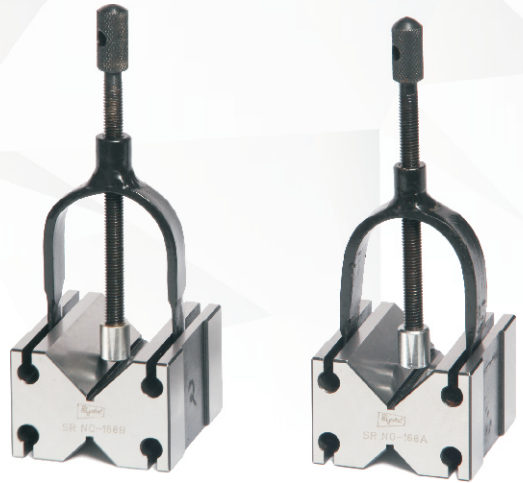
Sr. No	Cat. No.	Clamping Range (\varnothing D)	Size in mm L X W X H
1	AA-1714	3-20	25 X 20 X 20
2	AA-1711	5-30	50 X 40 X 40
3	AA-1712	6-50	80 X 63 X 63
4	AA-1713	6-70	100 X 80 X 80

We also Manufacture 'V' Blocks with Different 'V' Angles

Hardened & Ground 'V' Blocks

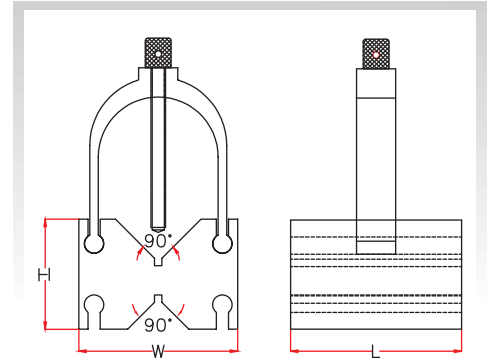
Series AA-170

- V' Blocks are Hardened & Ground to 55 HRC \pm 2 HRC.
- The top 'V' and bottom 'V' are parallel within \pm 3 micron and it's squareness to the end faces and height variations to the 'V' Block in a pair is within \pm 3 micron.
- Supplied with Clamp for holding job.
- 'V' Blocks are so designed that clamps do not protrude over the sides.



Specifications:

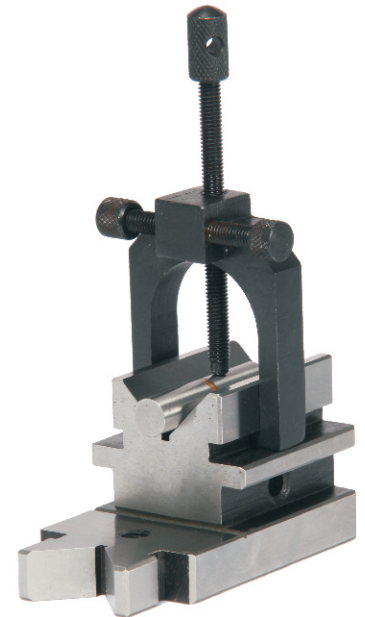
Sr. No	Cat. No.	Clamping Range (\varnothing D)	Size in mm L X W X H
1	AA-1701	3-25	45 X 40 X 35
2	AA-1702	3-40	55 X 55 X 40
3	AA-1703	5-50	70 X 65 X 45
4	AA-1704	5-60	125 X 90 X 70



Tool Room 'V' Blocks Clamp

Series AA-175

- The sides are ground parallel and the 'V' groove is ground central and parallel to the sides and the base.
- The block is 48mm square, and the base length is 90mm. An added feature is the tapped holes used for mounting the 'V' Block on face plates or angle plates.
- The block also has one M10 tapped hole in the base and one M8 on each side so that it can be attached to an angle plate. The groove at the stepped end is at a right angle to the base and is handy for holding threaded studs, round pins.



Specifications:

Sr. No	Cat. No.	Size in mm	Clamping Range (\varnothing D)
1	AA-1751	With one V Block & One Clamp 48 square x 90L	30mm