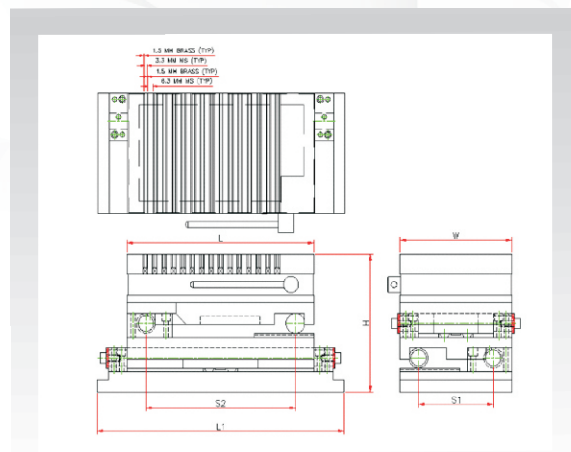
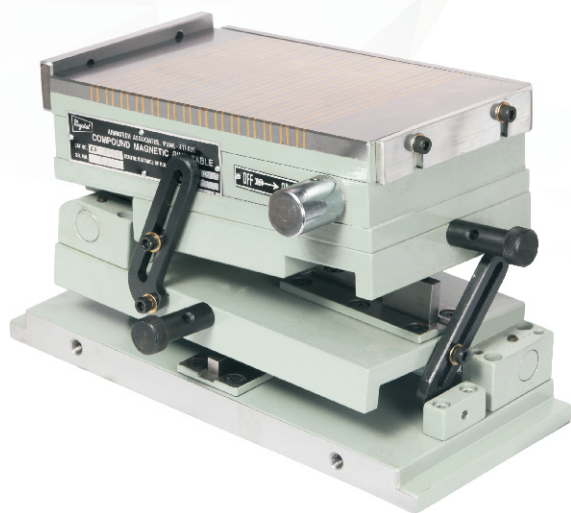


Compound Magnetic Sine Tables

Series AA-604



- Compound Magnetic Sine tables are ideal for precision grinding of multiple angles.
- They are made from high quality steel & base plate contains hardened bits.
- An angle can be set to within ± 5 seconds of a degree.
- Firm hinge clamps reduce possibility of distortions.
- Flatness 0.005mm per 100 mm. Center distance of the roller is within 0.005 mm.
- Fine pitch chuck of 9.9mm with laminated brass pole is provided for rigid clamping of small , medium & large components.
- Suitable for angle range from 0-45 degree.

Specifications:

Sr. No.	Cat. No.	Size in mm L X W X H	C. D. of Roller Plain Angle (S1)	C. D. Compound Angle (S2)	Bottom Plate Length (L1)
1	AA-6041	150 X 120 X 165	70	100	230
2	AA-6042	250 X 150 X 165	100	200	330
3	AA-6043	300 X 150 X 170	100	200	380
4	AA-6044	450 X 150 X 170	100	300	530
5	AA-6045	400 X 200 X 170	150	300	480