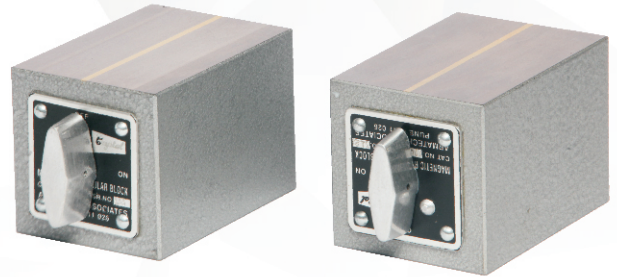


Magnetic Rectangular Blocks

Series AA-193

- Magnetic rectangular blocks are designed to hold steel components in position while welding, marking or grinding.
- They are useful in Tool-Room while doing assemblies of jigs and fixtures.
- They are used with sine tables for inspection of components.
- They can be used as magnetic parallels as the pairs are matched within ± 5 micron. Except for 1" ,
- The bigger sizes are provided with on-off switch.



Standard Blocks - S

Sr. No	Cat. No.	Size in mm L X W X H
1	AA-1931 S	25 X 25 X 25
2	AA-1932 S	75 X 56 X 60
3	AA-1933 S	100 X 70 X 70
4	AA-1934 S	150 X 70 X 85

Hardened Blocks - H

Sr. No	Cat. No.	Size in mm L X W X H
1	AA-1932 H	75 X 56 X 60
2	AA-1933 H	100 X 70 X 70
3	AA-1934 H	150 X 70 X 85

Magnetic Tool Holder

Series AA-150

- Designed to hold work magnetically for inspection & layout work, Very Useful For Holding Odd shaped Parts for Grinding.
- Accuracy for Flatness, Parallelism and Squariness is within ± 0.005 mm.

Specifications:

Sr. No	Cat. No.	Size in mm L X W X H
1	AA-1501	200 X 120 X 100

